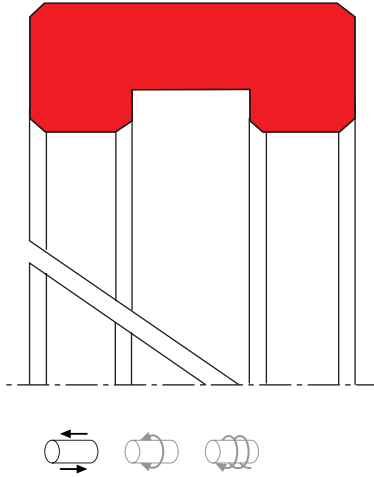


# SEAL SPEC F07



## description

with groove on inside diameter, for piston application. split and non split design available. the guide ring type F07 is mainly used on pistons. it provides guiding and bearing surfaces between piston and cylinder tube and prevents metal to metal contact between them.

the bearing rings can be used as single rings or multiple rings arranged adjacent to each other. the number of bearing rings depends on the expected side loads. the butt joints in adjacent bearings should be staggered.

## category of profile

machined only product.

## area of application

- use on any piston in hydraulic cylinders.
- standard hydraulic oil, oil-water, water-glycol, synthetic fluids.

## operating parameter & material

| material    | temperature         | surface speed max | specific load max     |
|-------------|---------------------|-------------------|-----------------------|
| POM         | -50 °C ... +100 °C  | 4,0 m/s           | 25 N/mm <sup>2</sup>  |
| PA          | -40 °C ... +100 °C  | 4,0 m/s           | 25 N/mm <sup>2</sup>  |
| PTFE glass  | -200 °C ... +200 °C | 4,0 m/s           | 3 N/mm <sup>2</sup>   |
| PTFE bronze | -200 °C ... +200 °C | 5,0 m/s           | 4,5 N/mm <sup>2</sup> |
| TEX         | -40 °C ... +130 °C  | 1,0 m/s           | 90 N/mm <sup>2</sup>  |

POM up to ø260 mm, PA above ø260 mm

the stated operation conditions represent general indications. it is recommended not to use all maximum values simultaneously. surface speed limits apply only to the presence of adequate lubrication film.

## surface quality

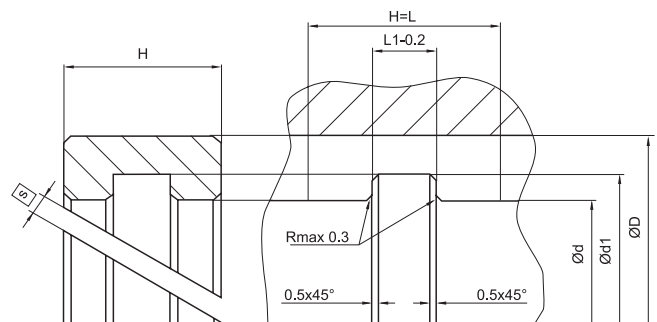
| surface roughness | Rtmax (µm) | Ra (µm)     |
|-------------------|------------|-------------|
| sliding surface   | ≤1,5       | 0,3 ... 0,5 |
| bottom of groove  | ≤6,5       | 0,8         |
| groove face       | ≤15        | 3,2         |

## tolerance recommendation

| seal housing tolerance |     |
|------------------------|-----|
| Ød                     | h8  |
| Ød1                    | h10 |
| ØD                     | H9  |

## seal & housing recommendations

please note that we are able to produce those profiles to your specific need or any non standard housing. for detail measurements, please see seal-mart catalog...



variations:  
- cutting gap width s=...mm  
- endless

